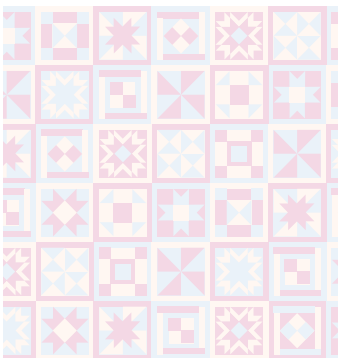


KENTUCKY ASSOCIATION FOR EARLY CHILDHOOD EDUCATION



INSIDE THIS ISSUE:

President's Message	1
KDE Reorganization	2
Accreditation Recognition	4
Membership Corner	4
Book Review	5
Tips for Teachers	5
In Memoriam	6



President's Message *by Terry Green*



Are you **ACTIVE** in your local chapter? KAECE has local groups across the state which allow you to connect and network with other Early Childhood Professionals in your area. These groups meet to provide professional development, advocate around local issues, and provide members with local support. Local chapters are often the best place to develop relationships because members can come together often and share similar issues and concerns unique to their area.

Local chapters are also a good place to develop your leadership skills. I was first elected to a position on my local chapter board nearly 30 years ago. From there I have gone on to serve on both the KAECE and SECA boards. Local chapters are always looking for new people to participate and to take leadership roles.

I encourage you to participate in your local chapter and, if you have an interest, consider taking a leadership role.

Not sure which local group is yours? Contact our office or me and we will provide you that information.

Interested in starting a local chapter? We can provide you with help. Please contact me and we will help get you started.



Kentucky Department of Education Reorganization

by Lisa Y. Gross, Director, Division of Communications and Community Engagement,
Office of Guiding Support Services



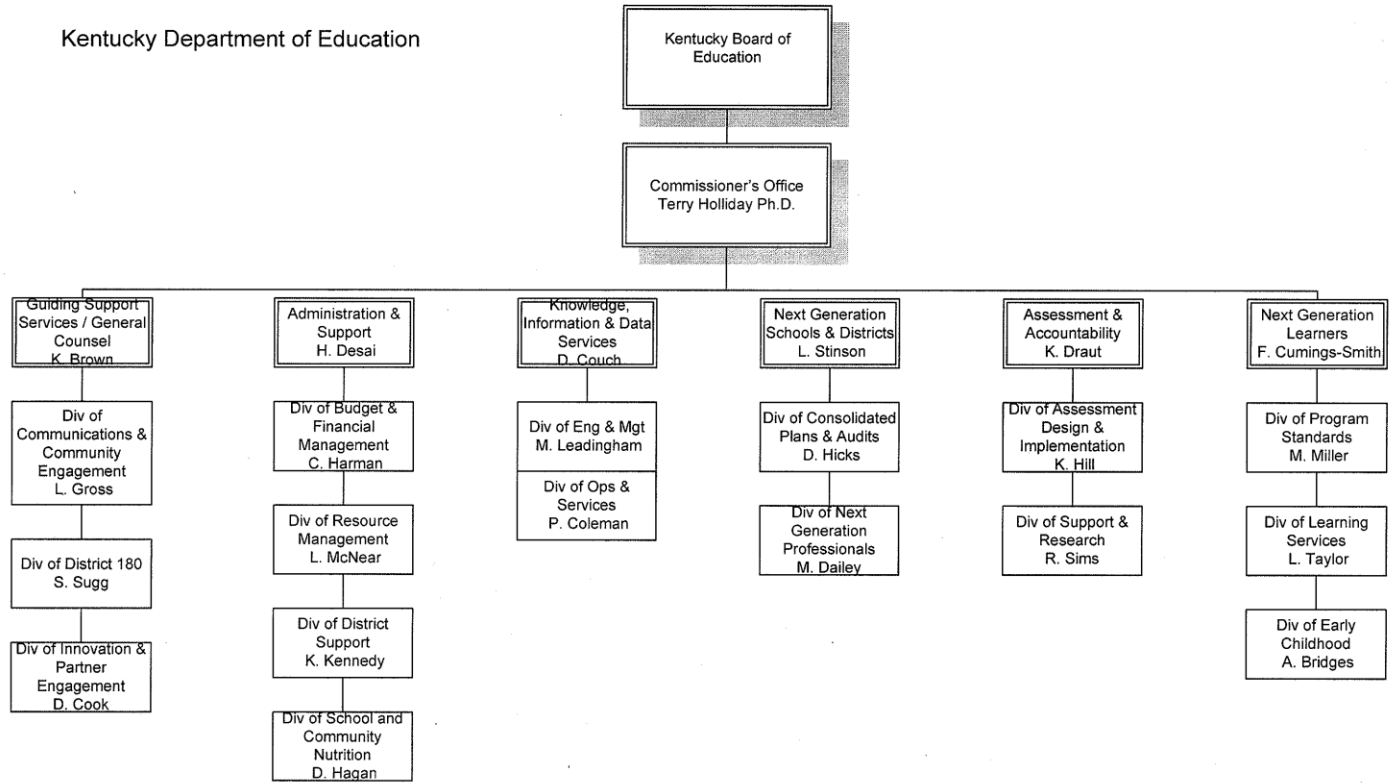
The Kentucky Department of Education (KDE) is embarking on a new model of organization that is designed to make the agency more streamlined and efficient and to help provide services more effectively.

This reorganization proposal delineates a model that focuses on next-generation learners; next-generation schools and districts; support and services for all of our constituents; information and data services; and more. KDE began operating under this new structure on Monday, July 19, and an executive order from the Governor's Office formalizing the new organization will be forthcoming.

"This proposed reorganization addresses two major issues," said Kentucky Education Commissioner Terry Holliday. "First, this model will incur annual cost savings of approximately \$500,000 in salaries with the elimination of higher-level positions and increase the efficiency of the agency. Second, this model enables the agency to directly address priorities related to Senate Bill 1 and other legislative mandates, Kentucky's Race to the Top application and the Kentucky Board of Education's strategic plan."

The proposed new organizational model will enable the agency to target the areas of greatest importance and provide the services schools and districts need to ensure student success, while complying with additional budget reductions required by the biennial budget shortfall.

Kentucky Department of Education



Accreditation Recognition

Congratulations to the following programs

for obtaining NAEYC Accreditation in May and June 2010!



Program name	Director
Northern Kentucky University Early Childhood Center	Melanie Caldwell
Early Childhood Laboratory	Charlotte Manno
Friends School, Inc.	Kristina Davis Christensen
Trent Montessori	Jan Haas
Daviess County Public Schools	Janet Land
Louisville Collegiate Junior Kindergarten	Hannah Schardein
Christian County Head Start	Gladys F. Williams
Community Action Council Kiwanis Child Development Center	Gelonda Zipper
Burrier Child Development Center	Dana Keller Bush



Membership Corner

by Sarah Taylor Vanover

During the month of July, the KAECE board sent a survey out to the membership in an attempt to see if the Kentucky Association of Early Childhood Education is serving its members in the best ways possible. We found that many of our members are not aware of what KAECE does or how to become involved. Being a member of KAECE (along with SECA and NAEYC) has many benefits. First, it gives you the opportunity to be a member of your local chapter of KAECE (ex. Audubon, Bluegrass, Western Kentucky, etc.). These local chapters often have regional trainings and meetings that are close to your area. They also give you the opportunity to network with local professionals in your field. Second, a KAECE membership allows you to attend the annual KAECE professional development institute at a discounted rate. This is a two-day conference that has a variety of trainers and workshops to benefit many different aspects of the field. Like the regional chapters, this conference is a wonderful time to network with other professionals in the field who are located throughout the state of Kentucky. Third, KAECE members receive our newsletter via email to keep you up-to-date on trends in the field of early childhood education. Another asset of the Kentucky Association of Early Childhood Education is the organization website. The website can help you determine which local chapter of KAECE you belong to, how to contact state board members, give you information on NAEYC accreditation or Week of the Young Child, or even how to contact state officials about Early Childhood advocacy issues. You can view the website at www.kaece.org.

If you have additional questions about your KAECE membership, you can email the VP of Membership at membership@kaece.org.



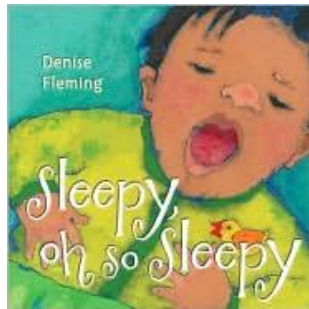
KAECE Newsletter Book Review

By Dana Bush

Book: *Sleepy, Oh So Sleepy*

Author/Illustrator: Denise Fleming

Copyright: 2010, Henry Holt and company, NY



Denise Fleming's latest book is a spoken lullaby with beautiful, peaceful illustrations of baby animals with heavy eyes that are going to sleep. The simple narrative, "Tiny baby panda, / sleepy, oh so sleepy. / Tiny baby penguin, / sleepy, oh so sleep," is one that will calm and sooth the most sleep adverse child. The book ends with a sleepy infant being tucked in and yawning- "Here's my sleepy baby, / my tiny sleepy baby." Intoxicating!

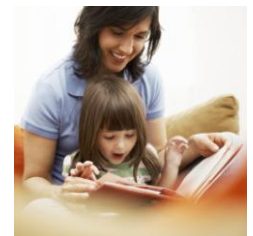
Denise Fleming will be speaking at the KAECE/KHSA Fall Institute on November 20th 2010.

Tips for Teachers by Teachers

by Jennifer L. Duty, Preschool Teacher, Burrier Child Development Center, Eastern Kentucky University

The Importance of Home visits During the Preschool Years

Making time to travel to each child's house prior to the first day of school is an important step in making a smooth transition for the child from home to school. Often times, preschool is the first real experience that a child may have in a social setting with children their own age. It is our job as teachers to make sure that this first experience is a fun, safe, learning environment that jumpstarts their educational future in the right direction. Home visits are a vital component to building strong relationships with families, as well as the child. This time spent with the family is also a wonderful opportunity for the family to ask any questions that they may have concerning their child's development or questions about the program. The child and their family may experience many wonderful benefits from the home visit that will increase the smoothness of the transition and set the tone for the year. I find it important to share information about myself during this visit, carry out simple activities with the family, and share pictures of the child's new school that may provide a visual prompt for what to expect.



In Memoriam

Dr. Robert Sexton
January 13, 1942 – August 26, 2010



The Kentucky Association for Early Childhood Education joins the early childhood community in mourning the loss of Dr. Robert Fenimore Sexton.

A tireless advocate for education, Dr. Sexton served as executive director of the Prichard Committee for Academic Excellence. He demonstrated his deep respect for the teaching profession and belief that all children could achieve excellence with his work organizing families, educators and policy makers to improve schools and universities in Kentucky.

Memorials may be made to the Robert F. Sexton Legacy Fund, Prichard Committee for Academic Excellence, P.O. Box 1658, Lexington, KY 40588.

Kentucky Association for
Early Childhood Education
Phone: 866-514-7265
Fax: 502-607-0771
E-mail:
business@KAECE.org

KAECE Vision Statement

The Kentucky Association for Early Childhood Education serves and supports early care and education professionals on behalf of young children and their families.



<http://www.kaece.org/>
